

Brokering Knowledge and Partnerships for SD-the Role of UNOSD

Capacity Building Workshop and Expert Group Meeting on Integrated Approaches to SD Planning and Implementation
New York, 27-29 May 2015



**UNITED NATIONS OFFICE FOR
SUSTAINABLE DEVELOPMENT (UNOSD)**

Jong-Soo Yoon, Ph.D.
Head of Office

Tel : +82-32-822-9084
Fax : +82-32-822-9089
Email : jsykorea58@hanmail.net
www.unosd.org

Room 205, Libertas Hall A,
Yonsei University International Campus
85 Songdo gwahak-ro, Yeonsu-gu,
Incheon 406-840, Republic of Korea

What is UNOSD?

- **Mandate**

- Help UN Member States
- Use knowledge for sustainability

- **Responses**

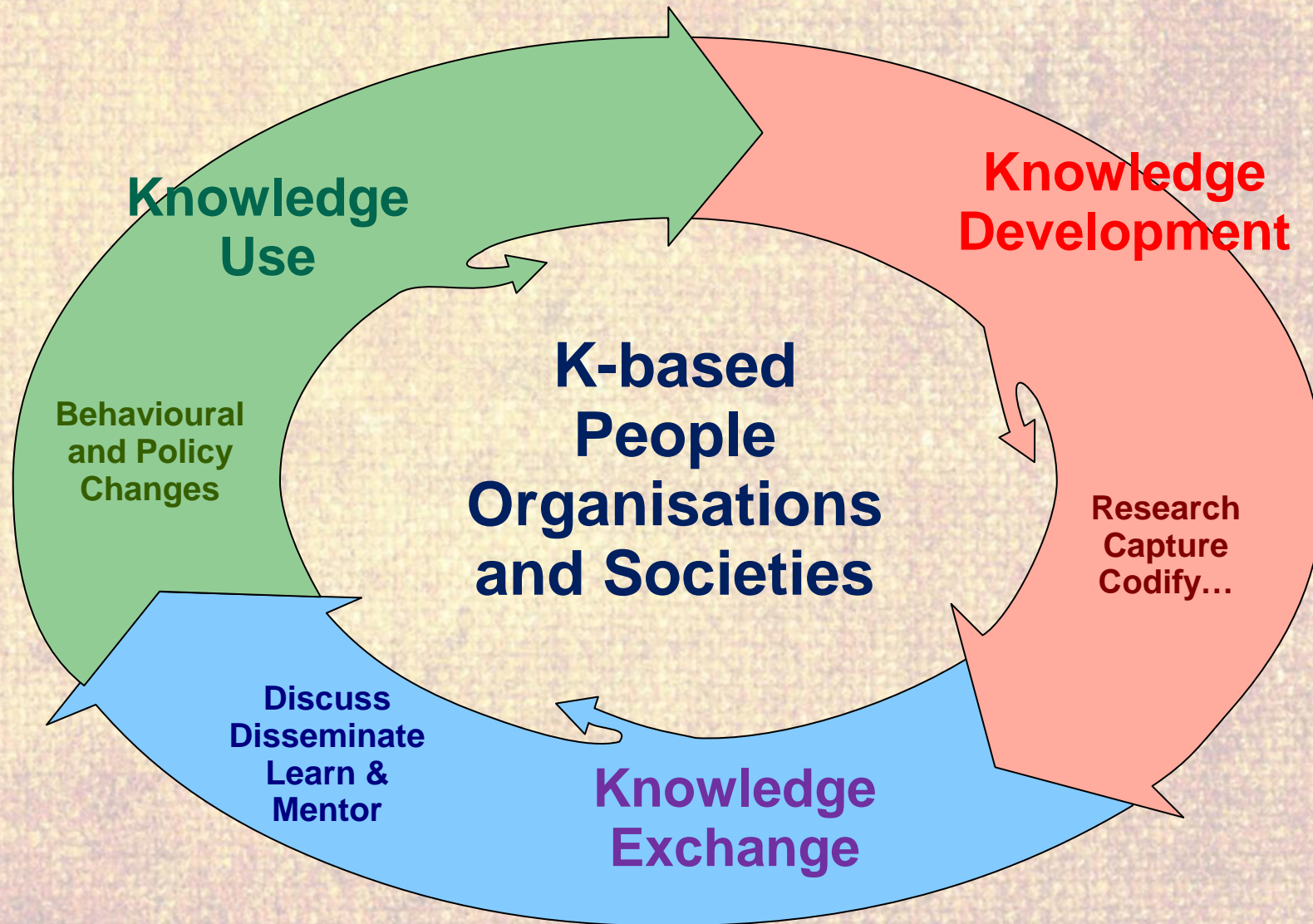
- Broker knowledge
- Build capacity
- Advise

- **In short**

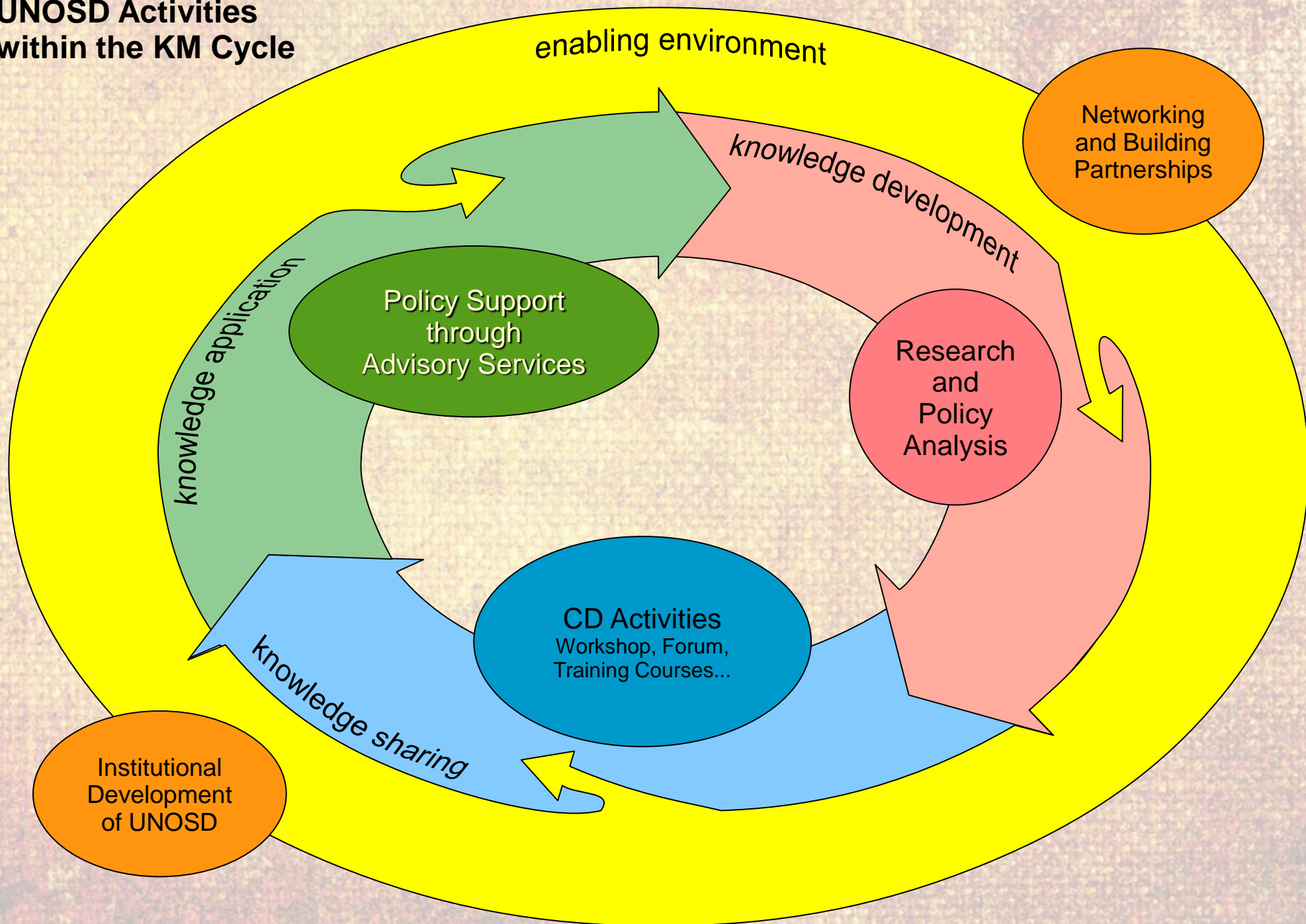
- Match needs to supply and enable knowledge flows



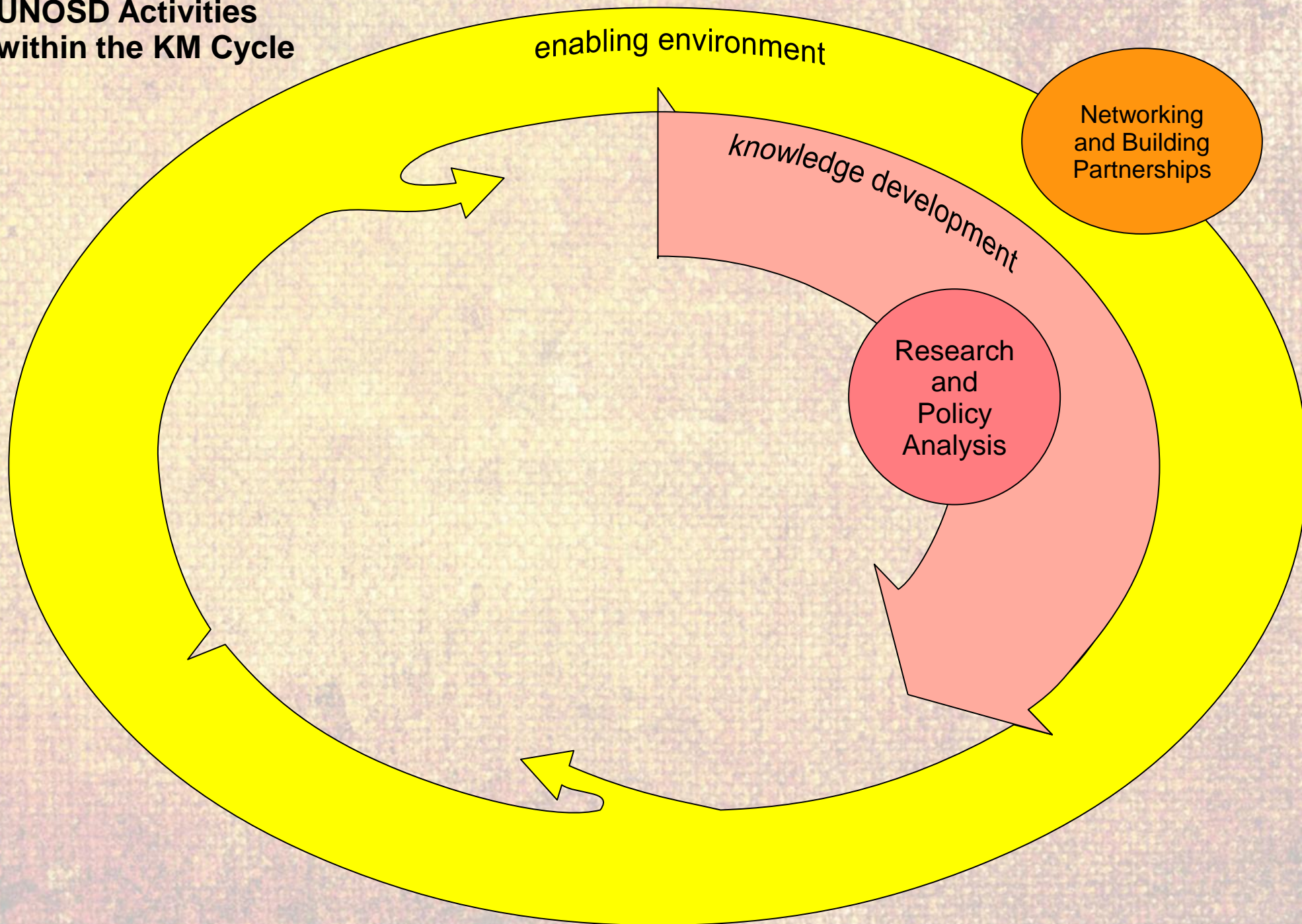
The KM Model



UNOSD Activities within the KM Cycle



**UNOSD Activities
within the KM Cycle**



Knowledge Development

Policy Research – with UNU

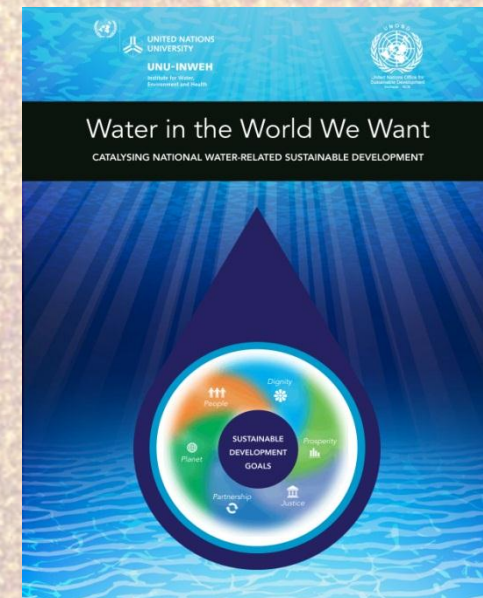
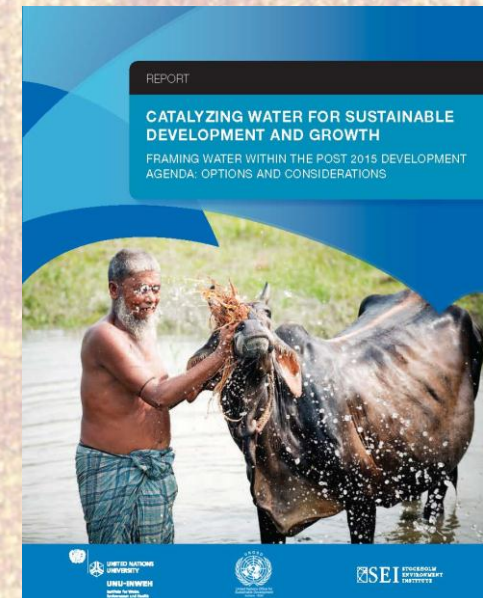
2013 “Catalyzing Water for Sustainable Development and Growth”

- Budget estimates to be needed for water goal

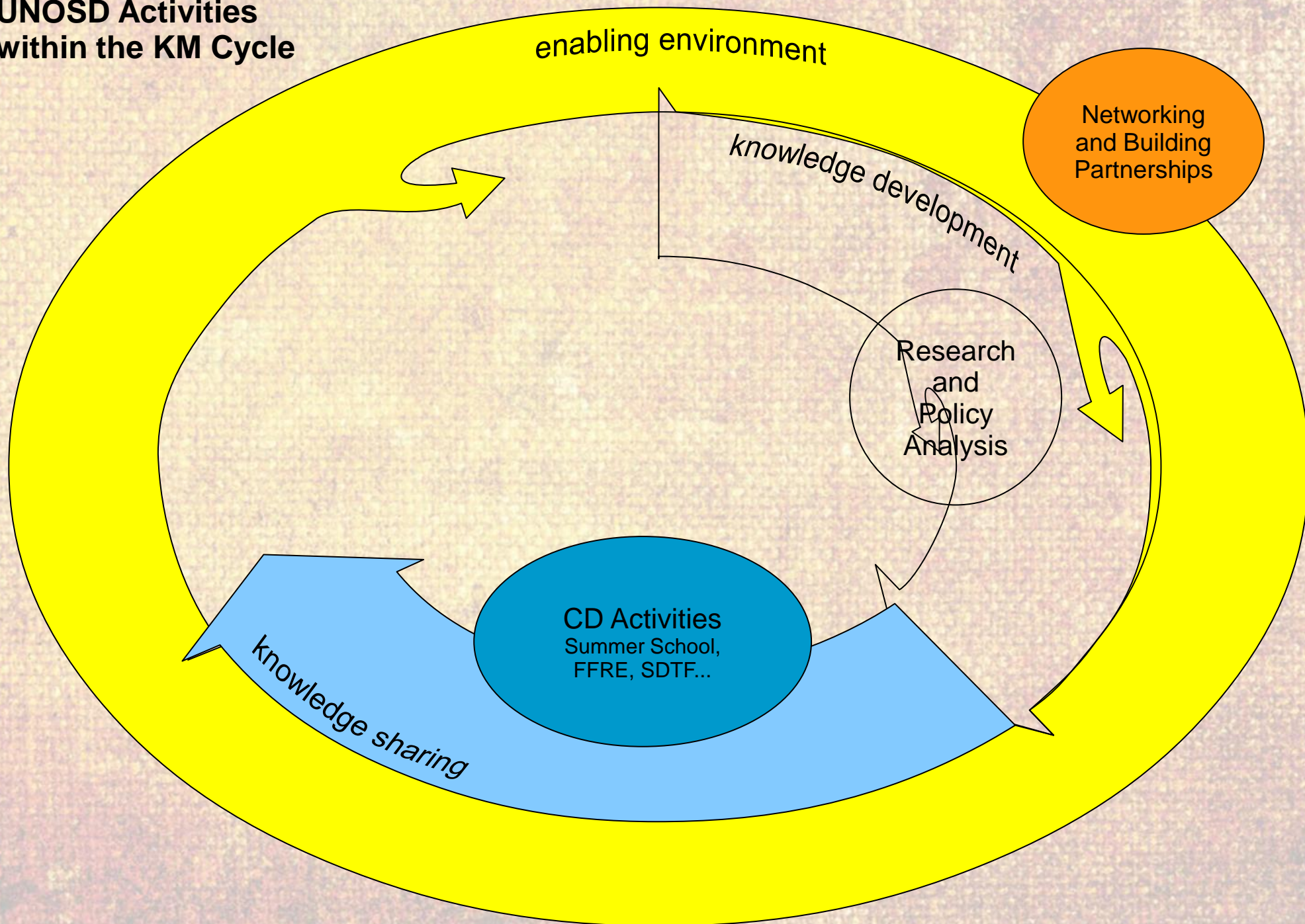
2014 “Water in the World We Want”

- 11 country case study

2015 “Development of Toolkit for Effective Implementation of Water Goal” (tbc)



UNOSD Activities within the KM Cycle



Capacity Development

I. SDTF (SD Transition Forum)

Annual Forum where wide range of policy makers, stakeholders, NGOs discuss the most pressing issues

(Third Forum, Oct. 2015)

II. Executive Training for Policy Makers

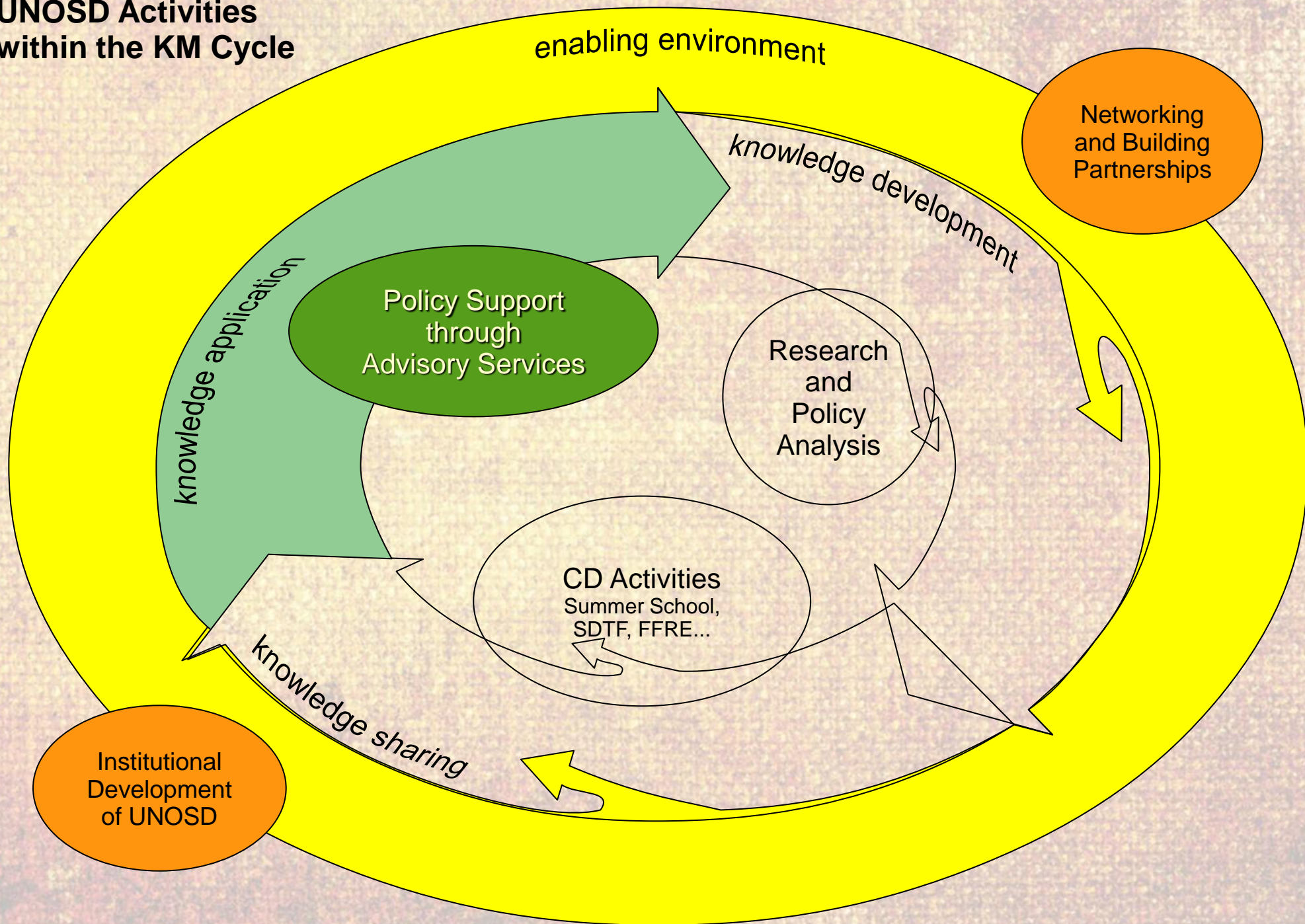
Formerly Summer School (Third Training, Nov. 2015)

III. FFRE (Fossil Fuel to Renewable Energy Transition)

Support a series of the organization of capacity building workshops, Mauritius (May 2014), Kenya (October, 2014), Latin America (TBD, 2015)



UNOSD Activities within the KM Cycle



“Tailor-Made” Advisory Services

MRV (Measurement, Reporting, Verification)
of GHGs emission

Rationale

- All countries required to submit national reduction target
- DC need to establish MRV system

Major activities

- Selection of one country per year
- Suggestion for institutional arrangement of GHG management
- Technical consultation and training for MRV
- Establish reliable GHGs Inventory System

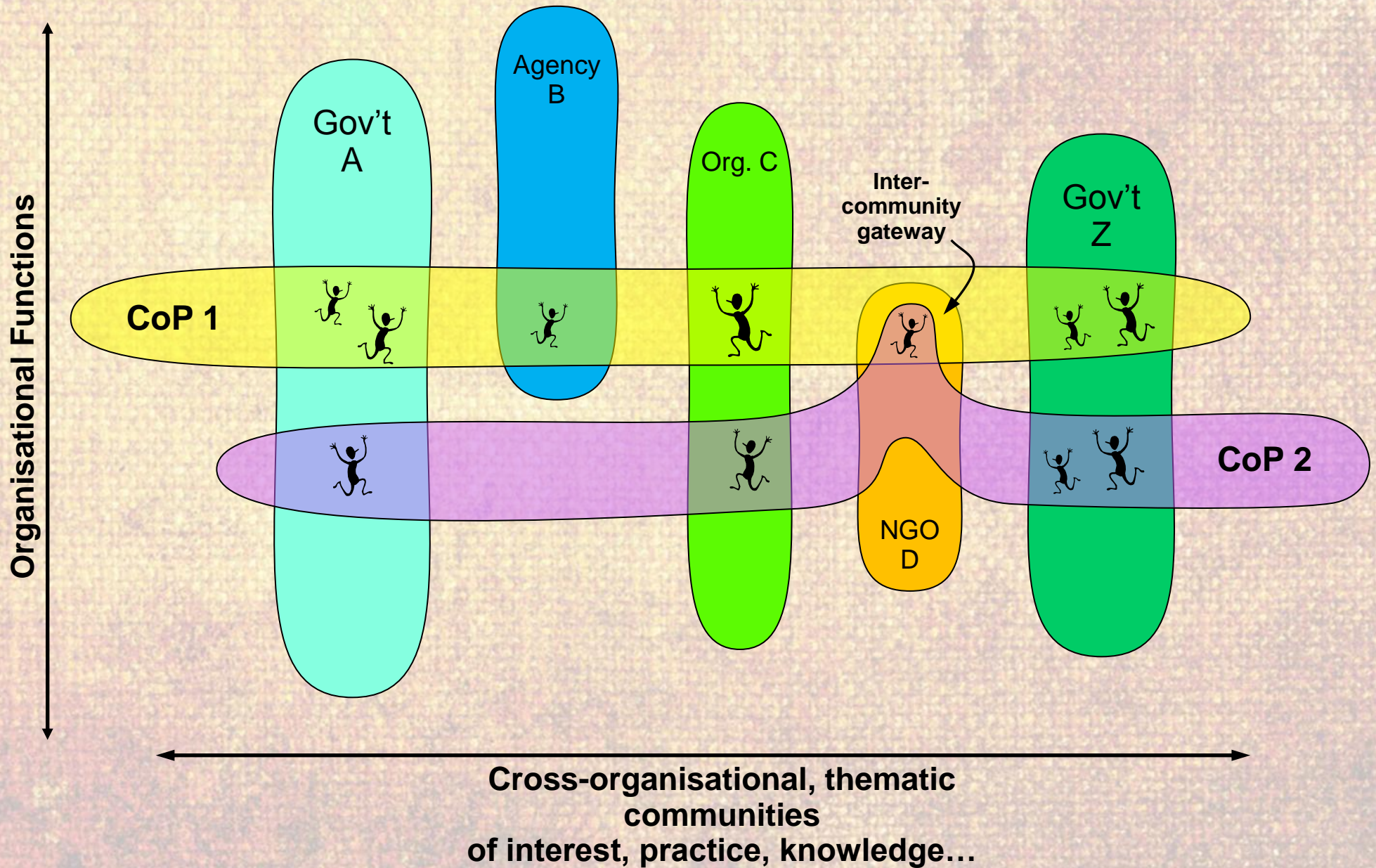
What are the Next Steps?

- (Brokering K) Nurture Community of Practice
 - Linked to participants of DSD/OSD activities
 - Virtual venues for facilitating dialogue and finding solutions
 - E-learning program
- (Partnership) Vast network of expertise in UN and beyond
 - Inventory of activities and good practices
 - Brokering what's best suited for our clients

Thank you!

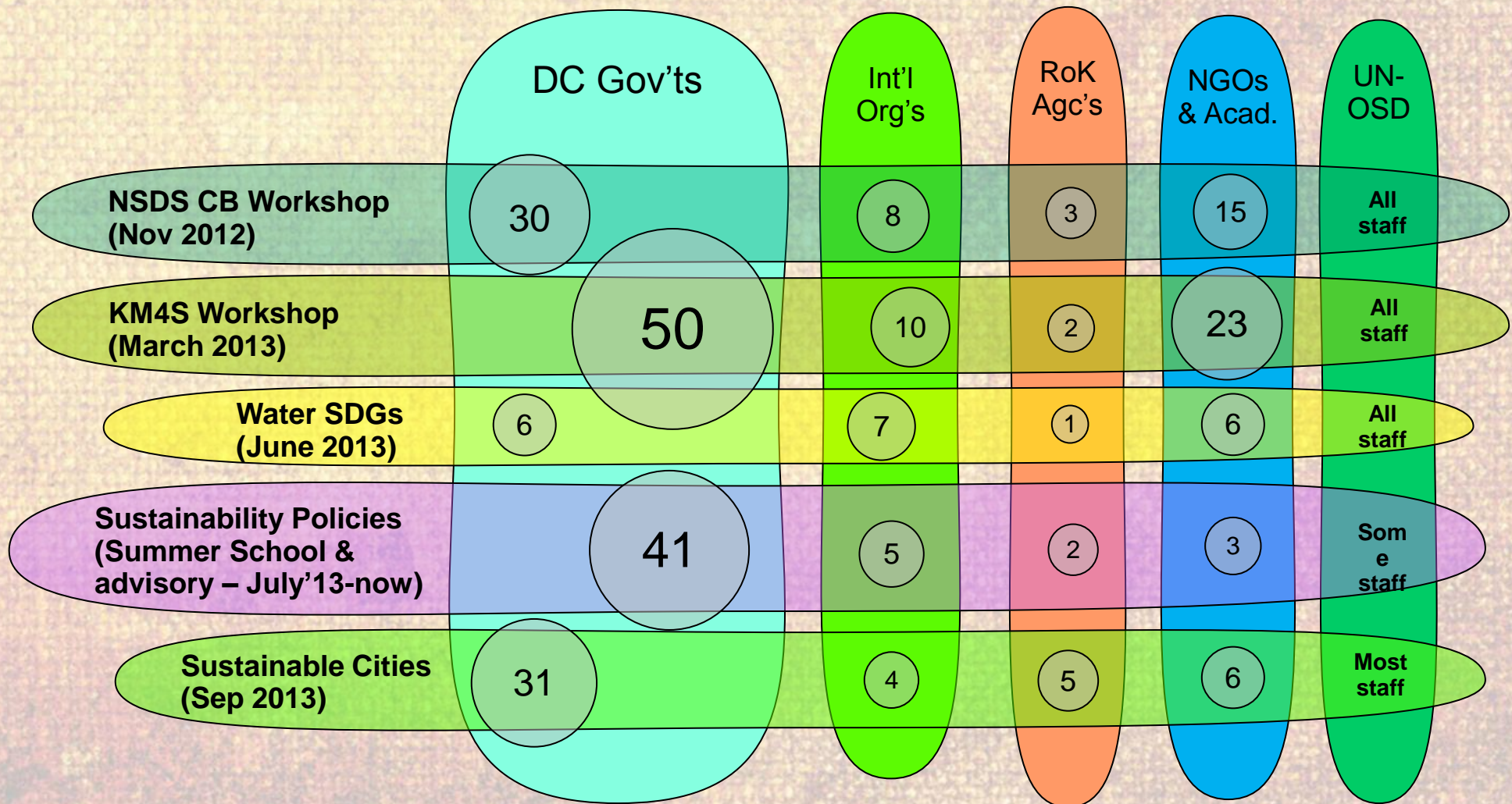
Supplemental Slides

What is a Community of Practice?



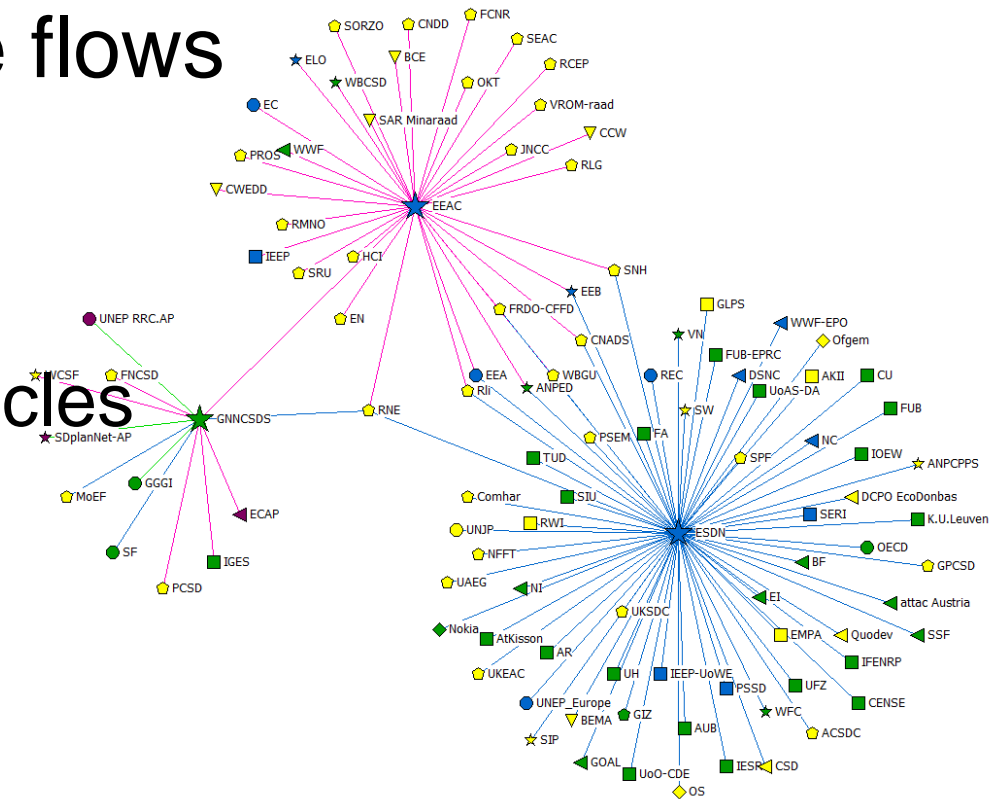
UNOSD's Proto-CoPs...

- Event-focussed networks
- Organic, but not yet nurtured as CoP



Network Mapping

- Match-making of sustainability organisations
 - Find who's who
 - Enable multi-directional flows
 - Respond to Rio+20 paragraph 66
- Overview of Knowledge flows
 - Find relations
 - Hubs, bridges, edges
 - Analyse flows and obstacles



Click image for further details...

Learning

- Summer School on Sustainability Transition
 - Provides evidence and skills for implementation of sustainability policies, delivered by global experts
 - Modules on governance, converging crises, policy formulation, and policy implementation
 - Civil servants from 41 developing countries
- eLearning
 - Provide eLearning tools
 - Host content from UNOSD and other providers
 - On issues of sustainability transitions

Example of UNOSD KM Brokering

